

### Contents

Revision History .....	2
Introduction.....	2
Upgrading Using SOLUS .....	3
Backing up SIMS and FMS .....	3
Permissions .....	4
SLG Compatibility.....	4
Included in this Release.....	5
Academic Management .....	5
Analysis .....	5
Assessment.....	6
Attendance 7.126.....	6
Cover .....	7
Dinner Money 7.126.....	8
Examinations Organiser 6.77 .....	9
Fees .....	9
IMS .....	10
Lesson Monitor 7.126.....	10
Partnership Xchange.....	11
Profiles .....	11
School Census .....	11
SIMS Learning Gateway 2 .....	11
SOLUS <sup>3</sup> Phase 1 .....	11
SQL Server 2008 Migration .....	12
STAR 7.126 .....	13
System Manager 6.91 .....	14
Updated Handbooks Available with this Release.....	15

Please read this release note carefully before installing or upgrading your software. Do not attempt any installation or upgrade without first making a fully restorable, verified backup of your SIMS system.

## Revision History

Version	Change Description	Date
1.0	Initial release	23/12/09

## Introduction

The SIMS 2009 Autumn Update Release (7.126) includes new functionality in Attendance/Lesson Monitor, Dinner Money, STAR and System Manager.



**IMPORTANT NOTE:** It is recommended that the SIMS 2009 Autumn Update Release is applied to existing installations by running SOLUS on the SIMS SQL Server.



**IMPORTANT NOTE:** The SIMS 2009 Autumn Update Release is not supported in a live environment running Windows 7. Customers using Windows 7 should run this release in a test environment only. Both SIMS and FMS will be supported on Windows 7 in the SIMS and FMS 2010 Spring Main releases.

### Generic Reporting

The content of the report output generated by clicking the **Print** button on any browser or detail page in SIMS displays only the information that is visible on-screen.

For example, from the **Detention Details** page (**Focus | Behaviour Management | Maintain Detentions**), clicking the **Print** button now produces a report containing only the information displayed on this screen.

### Important Information Regarding the Change in VAT Rate

The standard VAT rate in Dinner Money 7 currently defaults to 15%. In line with the government increase in the VAT rate, this code must be changed to the new **Rate** of 17.5% with a **Start Date** of 01/01/2010 (via **Tools | Dinner Money | VAT Codes**). For more information, please refer to *Adding/Editing VAT Codes* in the *Setting Up and Maintaining Dinner Money in SIMS* handbook.

## Where to Find More Information

Release notes for previous releases can be obtained by clicking the appropriate menu link on the Home page of our SOLUS website (<http://www.capitaes.co.uk/solus>).

All handbooks referred to throughout this release note can be obtained from any of the following locations:

- The **Documentation** button on the **Home Page** in SIMS. Once open, click the **Handbooks** button, select the required category then click the required handbook on the **Handbooks** page.
- SupportNet – copies of all handbooks are posted to SupportNet (<http://support.capitaes.co.uk>) and can be obtained by clicking the **Documentation** button on the Home page, then selecting **SIMS Handbooks** from the **Category** drop-down list and clicking the **Search** button.
- Copies of handbooks are now installed on the Central SIMS File server as PDFs and can be found in the S:\SIMS\Documentation folder (where S: indicates the location of your SIMS File server). Double-click the required PDF name to open the handbook.

If you are unable to obtain the required handbook using any of these methods, please email [publications@capita.co.uk](mailto:publications@capita.co.uk) and we will be pleased to email a copy to you.



**IMPORTANT NOTE:** *Capita Children's Services has made this release note available in both Microsoft® Word (available from SupportNet) and PDF format to enable Local Authorities to edit the information supplied herein. Capita Children's Services cannot be held responsible for any changes, errors or omissions resulting from the subsequent editing of this supplied document.*

---

## Upgrading Using SOLUS

The SIMS Online Update Service (SOLUS) enables you to download and run SIMS releases and patches via the Internet. This is achieved using the SOLUS2 Wizard.

For instructions on carrying out an upgrade, please refer to the *SIMS SOLUS Wizard 2 User Guide*, which is available from the SOLUS website (<http://www.capitaes.co.uk/solus>).

## Backing up SIMS and FMS

Where SIMS Personnel is used to generate Salary Projections in FMS, SIMS and FMS backups should be carried out at the same time. If one of the databases needs to be restored, the other database must be restored to the same point, i.e. if you restore the SIMS database, you must restore the FMS database to the same point and vice versa.



**IMPORTANT NOTE:** Backups are no longer zipped, because of the number of issues caused by zipping backup files. Recent operating systems now allow the use of compressed folders, which are recommended for automatically compressing backups. Please refer to your operating system documentation for instructions on applying compression to a folder.

## Permissions

A permissions spreadsheet listing all permissions relating to SIMS 7.126 can be accessed from our SupportNet website (<http://support.capitaes.co.uk>). Enter **PERMLIST** in the **Site Search** field then click the **Go** button.



**IMPORTANT NOTE:** From the SIMS 2009 June Main Release, permissions for the School Administrator user group has reduced access to staff data. Only the **Basic Details** and **Personal Information** panels are now displayed on the **Employee Details** page (via **Focus | Person | Staff**) for users with these permissions.

## SLG Compatibility

SLG is guaranteed to support the previous two main releases of SIMS, inclusive of any main release it is shipped with (and any update releases in between).

### Supported SIMS Versions with SLG Autumn Update Release

The SIMS Learning Gateway Autumn Update Release can be used alongside the following versions of SIMS:

- SIMS 2009 Autumn Update Release (SIMS 7.126)
- **SIMS 2009 Autumn Main Release (SIMS 7.124)**
- SIMS 2009 August Update Release (SIMS 7.122)
- **SIMS 2009 June Main Release (SIMS 7.120)**

If you install the SIMS 2009 Autumn Update Release (SIMS 7.126) and continue to run an older release of SLG, this is not guaranteed to work and is therefore not supported.

## Included in this Release

This release includes fixes and enhancements in the following areas:

- Academic Management
- Analysis
- Assessment
- Attendance 7.126
- Cover
- Dinner Money 7.126
- Examinations Organiser 6.76
- Fees
- IMS
- Lesson Monitor 7.126
- Partnership Xchange
- Profiles
- SIMS Learning Gateway 2
- SOLUS<sup>3</sup> Phase 1
- STAR 7.126
- System Manager 6.91

## Academic Management

### Enhancements

This release includes an enhancement in the following area:

- The Curricular Manager now has access to all of the Academic Management menu routes in SIMS.

## Analysis

### Fixes

This release includes a fix in the following area:

- It is now possible to export all types of Tracking Grid template (via **Routines** | **Data Out** | **Performance Analysis** | **Export**).

## Assessment

### Fixes

This release includes fixes in the following areas:

- Aspects are now displayed correctly when adding a Grade Tally formula (via **Focus | Assessment | Template**).
- All of the lines now print correctly when batch printing a trend analysis graph (via **Focus | Assessment | Trend Analysis | Review**).
- Formula columns marked as read-only are now displayed as read-only when displayed on a marksheet (via **Focus | Assessment | Template**).
- It is now possible to import grades with a length of up to 15 characters (via **Routines | Data In | Assessment | Import**).
- When inserting a graph, it is now possible to include grades against the points on the graph (via **Focus | Assessment | Individual Report**).
- All marksheet columns are now displayed correctly when the **Summary** is displayed (via **Focus | Assessment | Marksheet Entry**).
- The correct graphs are now displayed when exporting individual reports (via **Focus | Assessment | Individual Report**).
- Graphs are now displayed correctly when viewed through **Linked Documents** (via **Focus | Pupil (or Student) | Pupil (or Student) Details**).
- It is now possible to import templates where the name of the supply agency contains a '&' (via **Routines | Data In | Assessment | Import**).

## Attendance 7.126

### New Features

This release includes the following new feature:

- **Recording an Achievement or Behaviour Incident via the Register**

It is now possible to record an achievement or behaviour incident via the register. This is achieved by right-clicking one of the information columns on the register, e.g. **Name**, **Reg**, etc. then selecting either **Add Behaviour | <Behaviour Type>** or **Add Achievement | <Achievement Type>** from the pop-up menu.

The record can then be viewed and edited via **Focus | Behaviour Management | Maintain Achievements (or Maintain Behaviour Incidents)**.



### More Information:

*Recording Behaviour Incidents* chapter of the *Managing Pupil/Students in SIMS* handbook

*Recording Achievements* chapter of the *Managing Pupil/Students in SIMS* handbook

*Setting Up Behaviour Management* chapter of the *Setting up and Administering SIMS* handbook

*Taking the Register* chapter of the *Attendance in SIMS* handbook

*Taking the Register* chapter of the *Lesson Monitor in SIMS* handbook

## Fixes

This release includes fixes in the following areas:

- The number of conflicting marks created due to two teachers being assigned to the same lesson has been reduced (via **Focus | Attendance** (or **Lesson Monitor**) | **Edit Marks**).
- It is now possible to print registers for a two-week timetable (via **Routines | Attendance** (or **Lesson Monitor**) | **OMR Entry | Print OMR Registration Sheet**).
- The user defined **SEN Status** code is now mapped to the code defined by the user, rather than to the statutory category (via **Tools | Lookups | Maintain**).
- Registration marks for triple periods are now recorded correctly (via **Focus | Attendance** (or **Lesson Monitor**) | **Edit Marks**).

## Cover

### Fixes

This release includes fixes in the following areas:

- Where a teacher has two absences for the same period, the **No. of Lessons Affected** column now displays the correct figure (via **Tools | Cover | Impact Summaries | Students Impacted By Absence**).
- For 'Self' organisations, the organisation name now displays their surname, title and first initial (via **Focus | Person | Manage Classroom Staff**).
- Base bands with multiple source groups are now displayed correctly (via **Tools | Cover | Manage Suspension Rules**).
- It is now possible to select a day in order to arrange cover (via **Focus | School | Arrange Cover**).
- It is now possible to print Cover Slips for lessons with no scheduled rooms and one or more additional/change of room (via **Focus | School | Arrange Cover**).

- All pupil/students are now displayed on Cover Slips (via **Focus | School | Arrange Cover**).
- Activities are now displayed correctly when booking an unknown member of staff on the Cover Diary (via **Focus | School | Arrange Cover**).
- Any clashes displayed on the **My Classes Today** timeline on the **Home Page** now also display the room name (via **Focus | Home Page**).
- Classes that do not have a room assigned, but have been assigned an additional room for cover, are now displayed on the **Cover Grid** and **Absence Grid** displays of the **Notice Board Summary** (via **Focus | School | Arrange Cover**).
- Closed rooms that do not have any timetabled classes are now displayed on the **Full List** display of the **Notice Board Summary** (via **Focus | School | Arrange Cover**).
- If a teacher is providing cover for two lessons in the same period (i.e. the first 15 minutes of one lesson and the last 15 minutes of the other), this will no longer be displayed as a clash on the **My Classes Today** timeline on the **Home Page** (via **Focus | Home Page**).

## Dinner Money 7.126

### New Features

This release includes the following new features:

- **Own Provided Check Box on the Supervisor's List Report**  
**Reports | Dinner Money | Listings | Supervisor's List**

The **Supervisor's List** report now includes an **Own Provided** check box. This enables you to include or exclude from the report, any meals provided by the pupils, e.g. packed lunches.



#### More Information:

*Running Dinner Money Reports* chapter of the *Dinner Money in SIMS User Guide*.

- **Selecting a Group Type in the Dinner Numbers by Week Report**

The **Dinner Numbers by Week** report now includes the facility to select the **Group Type** required in the report.



#### More Information:

*Running Dinner Money Reports* chapter of the *Dinner Money in SIMS User Guide*.

---

## Fixes

This release includes a fix in the following area:

- When recording pupil meals, it is now possible to select a class with no current members without an error occurring (via **Focus | Dinner Money | Record Pupil Meals**).

## Examinations Organiser 6.77

### Fixes

This release includes fixes in the following areas:

- The correct examination board is now selected when importing basedata into a domestic season (via **Focus | Basedata**).
- It is now possible to generate submission files for examination entries for all element types (via **Focus | Submissions**).
- The performance of the Element/Component Results report has been improved (via **Reports | Results | Element/Component Results**).
- When run in 'Expanded' mode, the Group Performance Analysis report now displays correctly (via **Reports | Results | Group Performance Analysis**).
- You can now correctly run the PI Data Collation routine for all configurations (via **Focus | PI Values | PI Data Collation**).
- It is now possible to delete a result that has previously been included within PI (via **Focus | Marksheet – Data Entry**).
- It is now possible to edit an existing result that does not contain a subject name (via **Tools | External Results | Manual Entry**).

## Fees

### Enhancements

This release includes enhancements in the following areas:

- Fees reports have been added to the SIMS Report Library.
- The performance of the BACS file generation has been improved (via **Focus | Fees Billing | Instalments | BACS Generation**).

## IMS

### Fixes

This release includes a fix in the following area:

- Staff information is now correctly transferred, based on their **Teaching Staff** check box.

## Lesson Monitor 7.126

### New Features

This release includes the following new features:

- **Recording an Achievement or Behaviour Incident via the Register**

It is now possible to record an achievement or behaviour incident via the register. This is achieved by right-clicking one of the information columns on the register, e.g. **Name**, **Reg**, etc. then selecting either **Add Behaviour | <Behaviour Type>** or **Add Achievement | <Achievement Type>** from the pop-up menu.

The record can then be viewed and edited via **Focus | Behaviour Management | Maintain Achievements** (or **Maintain Behaviour Incidents**).



#### More Information:

*Recording Behaviour Incidents* chapter of the *Managing Pupil/Students in SIMS* handbook

*Recording Achievements* chapter of the *Managing Pupil/Students in SIMS* handbook

*Setting Up Behaviour Management* chapter of the *Setting up and Administering SIMS* handbook

*Taking the Register* chapter of the *Attendance in SIMS* handbook

*Taking the Register* chapter of the *Lesson Monitor in SIMS* handbook

### Fixes

This release includes fixes in the following areas:

- The number of conflicting marks created due to two teachers being assigned to the same lesson has been reduced (via **Focus | Lesson Monitor** (or **Attendance**) | **Edit Marks**).
- It is now possible to print registers for a two-week timetable (via **Routines | Lesson Monitor** (or **Attendance**) | **OMR Entry | Print OMR Registration Sheet**).
- The user defined **SEN Status** code is now mapped to the code defined by the user, rather than to the statutory category (via **Tools | Lookups | Maintain**).

- Registration marks for triple periods are now recorded correctly (via **Focus** | **Lesson Monitor** (or **Attendance**) | **Edit Marks**).

## Partnership Xchange

### Fixes

This release includes a fix in the following area:

- Identifiers for accepted and admitted applicants are now created without duplication.

## Profiles

### Fixes

This release includes a fix in the following area:

- When changing a result set in an existing embedded result tag, the existing aspect is now retained (via **Focus** | **Profiles** | **Comment Banks**).

## School Census

### Fixes

This release includes a fix in the following area:

- For PRUs using the Special School version of School Census (Spring) only, the **Support Staff** panel now displays information regarding multiple types of support staff (via **Routines** | **Statutory Returns** | **School Census**).

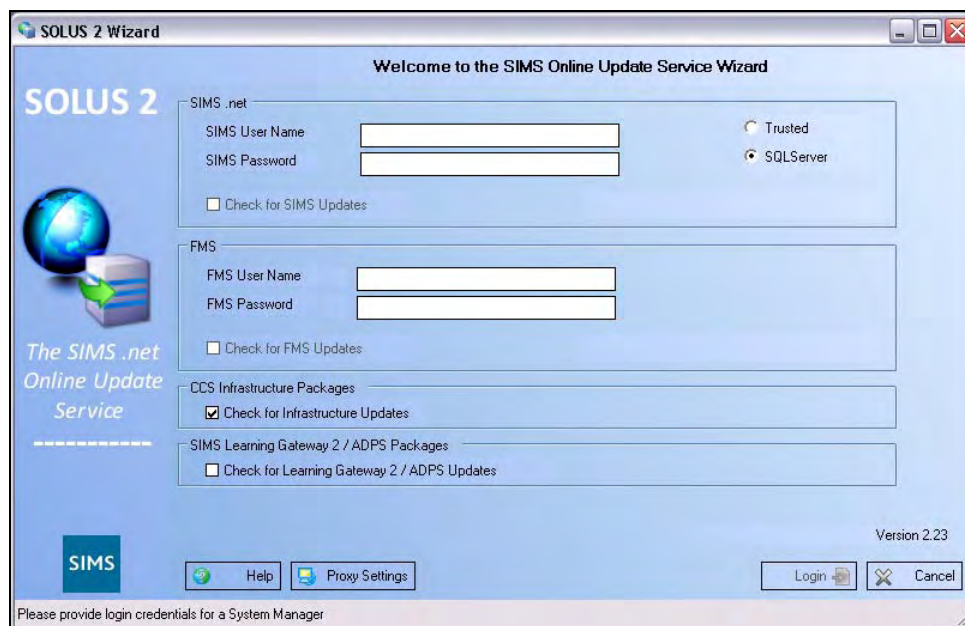
## SIMS Learning Gateway 2

For information on the new version of SIMS Learning Gateway 2, please refer to the release notes that will be made available from our SOLUS website (<http://www.capitaes.co.uk/solus>) on product release.

## SOLUS<sup>3</sup> Phase 1

SOLUS<sup>3</sup> Phase 1 enables the automated deployment and upgrade of SIMS onto workstation PCs.

In order to download this utility, select the **Check for Infrastructure Updates** check box in the SOLUS2 download wizard. This is a large download (approximately 600MB) and therefore, this check box is deselected by default. Selecting to download this file affects the download time.



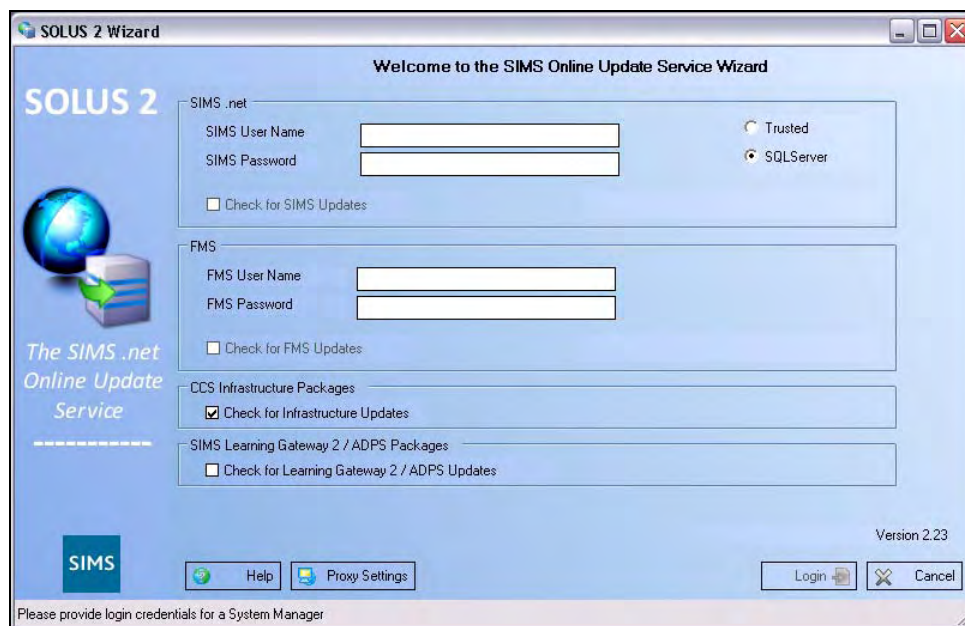
The download places the package file containing the SOLUS<sup>3</sup> setup files in the \SIMS\Setups folder on the SIMS File Server.

For more information on using SOLUS<sup>3</sup>, please refer to the SOLUS<sup>3</sup> Phase 1 handbook, available from SupportNet (<http://support.capitaes.co.uk>).

## SQL Server 2008 Migration

This utility enables schools to migrate their SIMS and FMS systems from Microsoft SQL Server 2005 to Microsoft SQL Server 2008. This process is currently optional but must be undertaken before October 2010.

In order to download this utility, select the **Check for Infrastructure Updates** check box in the SOLUS2 download wizard. This is a large download (approximately 600MB) and therefore, this check box is deselected by default. Selecting to download this file affects the download time.



The download places the package file containing the SQL Migration setup files in the \SIMS\Setups folder on the SIMS File Server.

For more information on migrating your SIMS and FMS system, please refer to the *Migrating SIMS to SQL 2008* handbook and the *Migrating FMS to SQL 2008* handbook, available from SupportNet (<http://support.capitaes.co.uk>).

## STAR 7.126

### New Features

This release includes the following new feature:

- **Recording an Achievement or Behaviour Incident via the Register**

It is now possible to record an achievement or behaviour incident via the register. This is achieved by right-clicking one of the information columns on the register, e.g. **Name**, **Reg**, etc. then selecting either **Add Behaviour | <Behaviour Type>** or **Add Achievement | <Achievement Type>** from the pop-up menu.

The record can then be viewed and edited via **Focus | Behaviour Management | Maintain Achievements** (or **Maintain Behaviour Incidents**).



#### More Information:

*Recording Behaviour Incidents* chapter of the *Managing Pupil/Students in SIMS* handbook

*Recording Achievements* chapter of the *Managing Pupil/Students in SIMS* handbook

*Setting Up Behaviour Management* chapter of the *Setting up and Administering SIMS* handbook

*Taking the Register* chapter of the *Attendance in SIMS* handbook

*Taking the Register* chapter of the *Lesson Monitor in SIMS* handbook

## Fixes

This release includes fixes in the following areas:

- It is now possible to edit the **Nation** field when editing the **Nationality and Passport Details** information in the **Ethnic/Cultural** panel of the **Pupil (or Student) Details** page (via **Focus | Pupil (or Student) | Pupil (or Student) Details**).
- It is now possible to assign more than one detention a day to a pupil/student (via **Focus | Behaviour Management | Pupil (or Student) Behaviour**).
- Registration tutors are now displayed on the **Missing Registers Notification** panel on the **SIMS Home Page** (via **Focus | Home Page**).

## System Manager 6.91

### New Features

This release includes the following new feature:

- **Filtering the View when Assigning Users to a Group**

When adding users to a group, the **Source Population** defaults to **User & Employee**. This setting can now be edited, enabling you to select from all users unknown to SIMS, for example (via **Focus | Group and Tools | Show Welcome Screen | Assign Users to User Group**).



#### More Information:

*Getting Started with System Manager* chapter of the *SIMS System Manager* handbook

*Managing Groups* chapter of the *SIMS System Manager* handbook

## Enhancements

This release includes an enhancement in the following area:

- The Curricular Manager now has access to all of the Academic Management menu routes in SIMS.

## Fixes

This release includes a fix in the following area:

- Deleting a user now also deletes linked reminders and messages from the **Home Page** (via **Focus | User, User | Delete User**).

## Updated Handbooks Available with this Release

The following handbooks have been produced for this release. Please refer to the *What's New in This Release* section in each handbook for details of the specific changes.

- Dinner Money in SIMS User Guide
- Attendance in SIMS
- Lesson Monitor in SIMS
- Managing Pupil/Students in SIMS
- Partnership Xchange for School Administrators
- Setting up and Administering SIMS
- SIMS System Manager